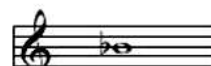


EL SI bemoll



LLOMB IS

Musical notation for the piece "LLOMB IS". It consists of three staves of music in 3/4 time, with a key signature of one flat (Bb). The notation includes various note values (quarter, eighth, and dotted notes) and rests. Vertical 'v' marks are placed above the staff at the beginning of the first measure of each line and above the final measure of each line, indicating breath marks or phrasing points.

JAZZ

Musical notation for the piece "JAZZ". It consists of six staves of music in 3/4 time, with a key signature of one flat (Bb). The notation includes various note values (quarter, eighth, and dotted notes) and rests. The first two staves are labeled "Introducció" and the last four staves are labeled "Tema". Vertical 'v' marks are placed above the staff at the beginning of the first measure of each line and above the final measure of each line, indicating breath marks or phrasing points.

TITÀNIC

Andante

