

1. Si cada infant té 11 llapis, quants n'hi ha d'AMAGATS a cada bossa opaca?



11	
4	



11	
	3

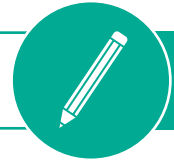


11	
5	



11	
1	

Data:



2. Si dins de cada pot hi havia algunes fruites i n'hem tret unes quantes, quantes fruites hi ha ara dins de cada pot?



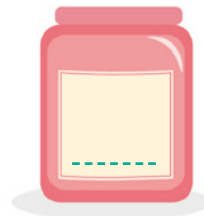
$$9 - 3 = \dots$$

$$9 = 3 + \dots$$



$$9 - 2 = \dots$$

$$9 = 2 + \dots$$



$$10 - 6 = \dots$$

$$10 = 6 + \dots$$